



SPONSORSHIP OPPORTUNITIES



Innovating Cancer Care Now

2025



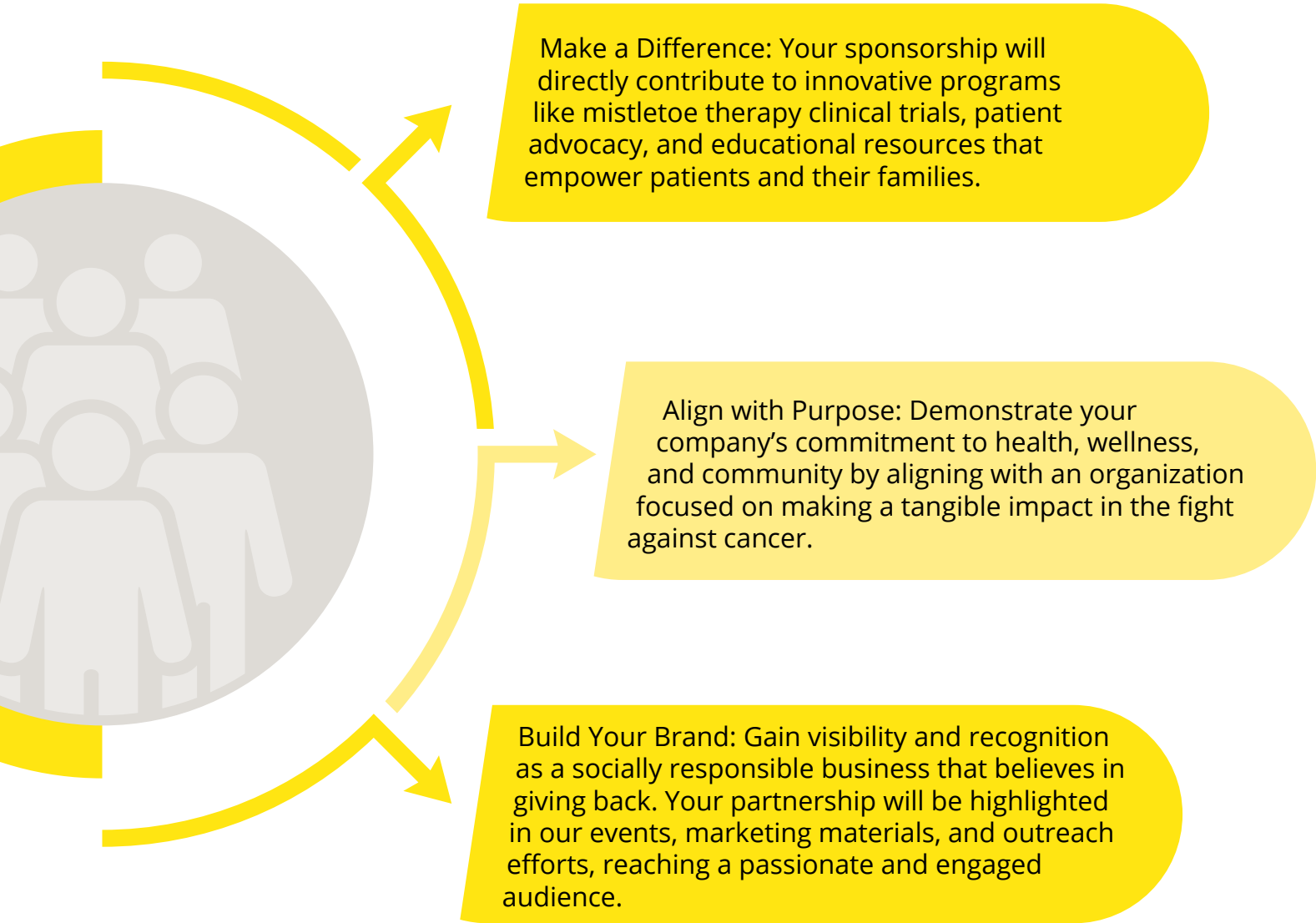
OUR VISION

To see cancer patients and their families discover their pathway to healing.

OUR MISSION

To help families face, fight, and overcome cancer.

WHY PARTNER WITH US?



2024 REACH 400K+

MONTHLY WEBSITE TRAFFIC

4.5k

INSTAGRAM FOLLOWERS

22k

EMAIL SUBSCRIBERS

15k

PODCAST

Take a deep dive into your healing with health experts, integrative oncology practitioners, best-selling authors, biblical faith leaders, and cancer thrivers from around the globe.

North America 94.7K | Europe 4,936 | Oceania 2,906
Asia 1,080 | Africa 409 | South America 250

PODCAST DOWNLOADS

104k+

GLOBAL RANKING TOP

3%



OUR FOUNDERS

After facing, fighting, and overcoming stage IV colon cancer, Ivelisse Page wanted to reach out to other patients facing the many challenges she encountered through her cancer journey.

After assembling a team of doctors and accumulating extensive research, Ivelisse and her husband, Jimmy, compiled reliable resources to heal the whole person physically, spiritually, mentally and emotionally.

They established Believe Big in 2011 to help families bridge the gap between conventional and complementary medicine for fighting cancer.

SPONSORSHIP OPPORTUNITIES

Your sponsorship with Believe Big empowers us to bridge the gap between conventional and complementary cancer treatments, offering patients hope, healing, and the resources to thrive. Together, we can give families the tools they need to face their battles with strength and courage, helping them not just survive but truly live.



“After being diagnosed with Stage 4 Urothelial Carcinoma and Gleason 9 Prostate Cancer in April of 2019, I was given only months to live. Now, with the help of Believe Big, Dr. Steven Johnson, Mistletoe Integrative Therapy, and Many Prayers, all my scans are clear of Cancer, almost Six Years Later”
- Alan Y.

		BRASS \$1,000	COPPER \$2,500	BRONZE \$5,000	SILVER \$10,000	GOLD \$15,000	PLATINUM \$25,000	DIAMOND \$50,000	LEGACY \$100,000
LOGO ON WEBSITE AND SIGNAGE AT EVENTS		★	★	★	★	★	★	★	★
OPPORTUNITY TO PROVIDE PROMOTIONAL GIFT TO ATTENDEES*		MARKETING MATERIAL PLACEMENT	MARKETING MATERIAL PLACEMENT	MARKETING MATERIAL PLACEMENT	MARKETING MATERIAL PLACEMENT	★	★	★	★
INTEGRATIVE CANCER SYMPOSIUM		1 GENERAL ADMISSION	2 GENERAL ADMISSION	2 VIP PASSES	3 VIP PASSES	3 VIP PASSES	5 VIP PASSES	8 VIP PASSES	10 VIP PASSES
PODCAST MENTIONS AT THE START OR END*				★ ONE MENTION	★ ONE MENTION	★ TWO MENTIONS	★ TWO MENTIONS	★ THREE MENTIONS	★ FOUR MENTIONS
PODCAST ADVERTISEMENT 30 SECONDS*					★ ONE	★ ONE	★ TWO	★ THREE	★ FOUR
HYPERLINKED LOGO IN PODCAST/WEBINAR, SHOW NOTES, EMAIL & SOCIAL MEDIA					LOGO LISTED	★	★	★	★
VERBAL RECOGNITION AT EVENTS								★	★
INVITE TO EXCLUSIVE DONOR EVENT WITH CO-FOUNDERS								★	★
FEATURE SPOTLIGHT ARTICLE IN ANNUAL REPORT & NEWSLETTER*									★

*WITH APPROVAL

SPONSORSHIP COMMITMENT

Organization Name: _____

(As it should appear on all marketing, advertising & program materials)

Organization Contact: _____

Contact Email: _____ Contact Phone: _____

Contact Address: _____

Sponsorship Level: _____ Sponsorship Amount: _____

☐ I will pay by credit card ☐ I'll be sending a check ☐ Please send me an invoice

FOR CREDIT CARD PAYMENTS:

Please complete
payment by scanning
the QR code or visit
believebig.org/sponsorship



For other payment options or to wire funds please
call us at 888-317-5850 or email us at dannielle@believebig.org

FOR CHECK PAYMENTS:

Please send completed form and
check (Payable to Believe Big) to:
Believe Big
11350 McCormick Road, Executive
Plaza I, Suite 100
Hunt Valley, Maryland 21031

AUTHORIZATION & COMMITMENT

By signing below, you confirm your personal or company's commitment to sponsor Believe Big.

Name & Title: _____

Signature: _____ Date: _____

WHAT'S NEXT?

- Please email a transparent .png or .eps logo file to kristen@believebig.org. The sooner we receive your logo the sooner we will add it to our marketing materials.
- Stay tuned to hear from our staff to collect your attendee information.

Questions? Please contact our Jackie at:
1-888-317-5850 | jackie@believebig.org

